

1 Bedroom Flat for sale

Brydale house, Rotherhithe Street London, SE16 2PT



Key Features:

- One Bedroom Flat
- Canada Water Station Nearby
- Balconey
- Shops & Restaurants nearby
- 11th Floor

£345,000

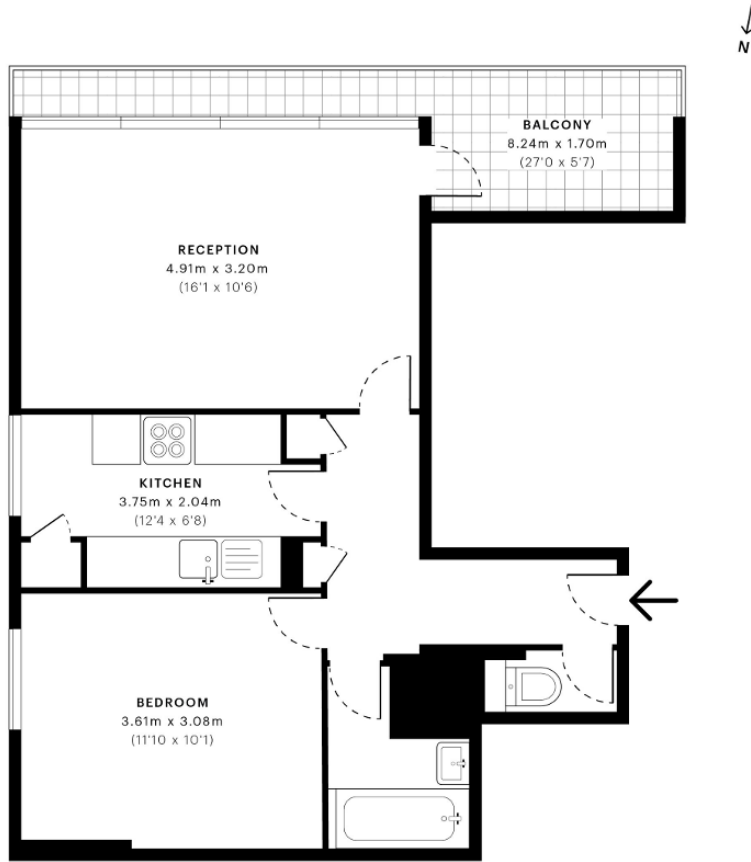


Brydale House, SE16

CAPTURE DATE 29/09/2020 LASER SCAN POINTS 145,857,227

GROSS INTERNAL AREA

45.98 sqm / 494.92 sqft



— Eleventh Floor

 **GROSS INTERNAL AREA (GIA)**
The footprint of the property
45.98 sqm / 494.92 sqft

 **NET INTERNAL AREA (NIA)**
Excludes walls and external features
Includes washrooms, restricted head height
42.92 sqm / 461.99 sqft

 **EXTERNAL STRUCTURAL FEATURES**
Balconies, terraces, verandae etc.
7.91 sqm / 85.14 sqft

 **RESTRICTED HEAD HEIGHT**
Limited use area under 1.5 m
0.00 sqm / 0.00 sqft



Spec Verified floor plans are produced in accordance with Royal Institution of Chartered Surveyors' Property Measurement Standards. Plots and gardens are illustrative only and excluded from all area calculations. Due to rounding, numbers may not add up precisely. All measurements shown for the individual room lengths and widths are the maximum points of measurements captured in the scan.

IPMS 3B RESIDENTIAL 53.80 sqm / 579.10 sqft
IPMS 3C RESIDENTIAL 51.66 sqm / 556.06 sqft

spec id 5f69f8757e22390db7022568